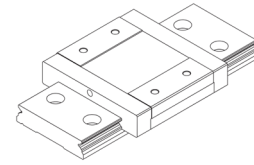
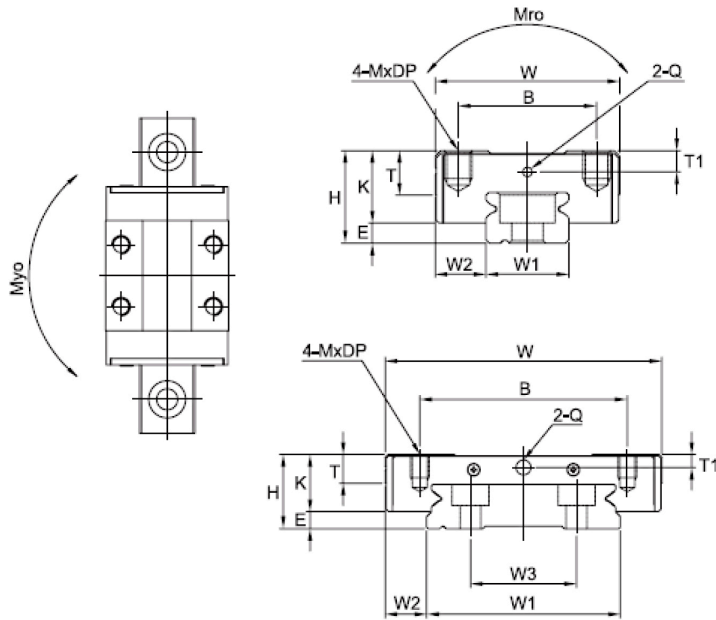


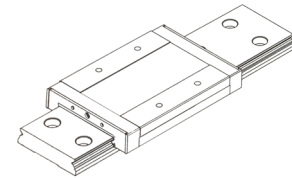
SBI Linear Rail Series

Miniature Series: **SBMW, SBMWL**



SBMW

Width and length of block are modified to increase load ratings and permissible moments.



SBMWL

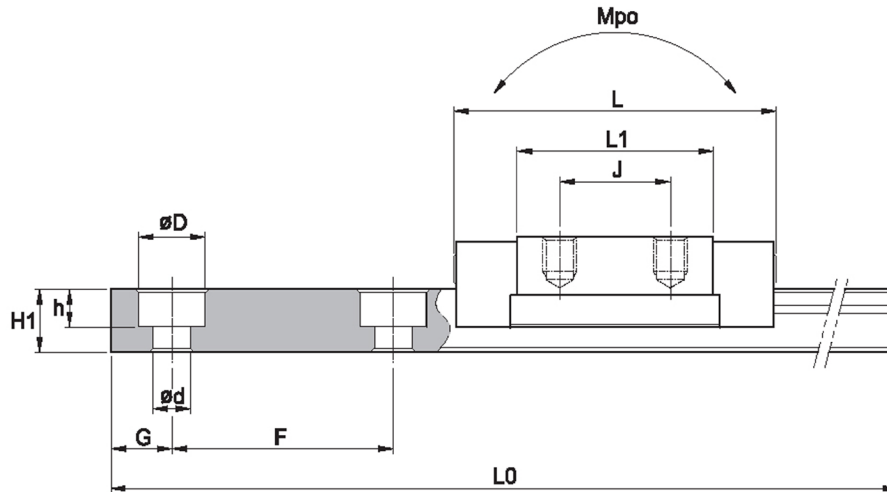
Uses same rail as SBMW type with longest whole length for heaviest load.

Model	Mounting dimension				Block dimensions									
	H	W	L	E	Mounting tap hole				L1	T±1	K	Grease fitting		
					B	J	M	DP				T1	Q	
SBMW 09	12	30	42.3	3.7	21	12	M3	3	27	4.5	8.3	2	ø1	
SBMWL 09	12	30	50.3	3.7	23	24	M3	3	35	4.5	8.3	2	ø1	
SBMW 12	14	40	48.4	4	28	15	M3	3.5	30.9	5.5	10	2.4	ø1	
SBMWL 12	14	40	59.5	4	28	28	M3	3.5	42	5.5	10	2.4	ø1	
SBMW 15	16	60	57.5	3.7	45	20	M4	4.5	38.9	6.5	12.3	2.6	ø2.7	
SBMWL 15	16	60	73.4	3.7	45	20	M4	4.5	54.8	6.5	12.3	2.6	ø2.7	

C (Basic dynamic load rating), Co (Basic static load rating)

LINEAR RAIL SYSTEM

Available for Quick Delivery
Miniature Series: **SBMW, SBMWL**



Model	Rail dimensions										Basic load rating (kN)		Permissible static moment (kN·m)			Mass	
	W1	W2	H1	W3	F	Bolt hole			G	Max Rail Length L0	C	Co	Mro	Mpo	Myo	Block (kg)	Rail (kg/m)
						d	D	h									
SBMW 09	18	6	7.5	-	30	4	6	4.5	10	1190	2.45	3.92	36	16.3	16.3	0.03	0.99
SBMWL 09	18	6	7.5	-	30	4	6	4.5	10	1190	3.52	5.37	48.4	30.4	30.4	0.05	0.99
SBMW 12	24	8	8.5	-	40	5	8	4.5	15	1190	4.02	6.08	47.6	17.2	18.6	0.03	1.42
SBMWL 12	24	8	8.5	-	40	5	8	4.5	15	1190	5.96	9.21	89.2	46.4	52.8	0.1	1.42
SBMW 15	42	9	9.5	23	40	5	8	4.5	15	1190	6.66	9.8	137	35.3	38.2	0.12	2.93
SBMWL 15	42	9	9.5	23	40	5	8	4.5	15	1190	9.91	14.9	250	35.4	108	0.21	2.93